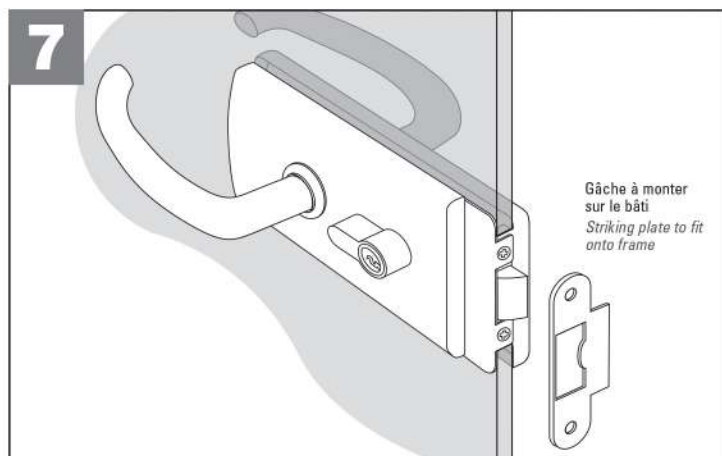
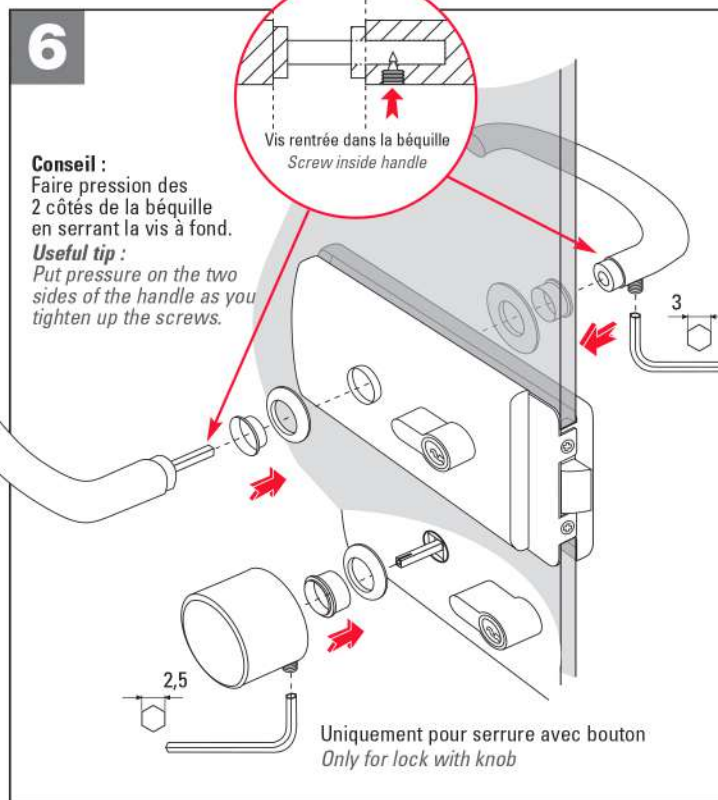
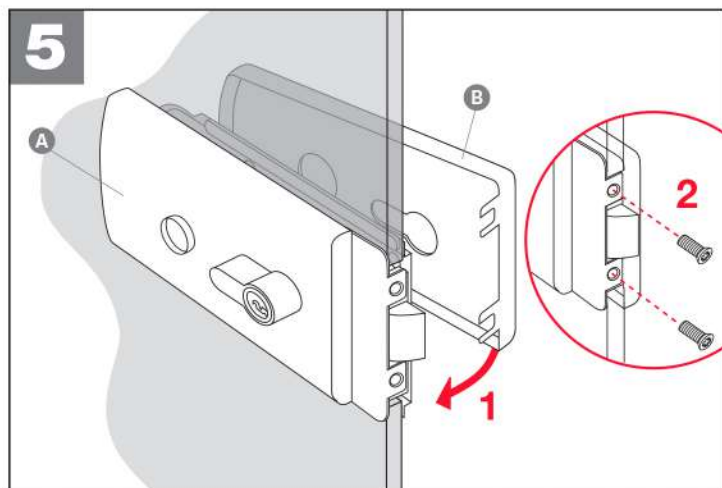
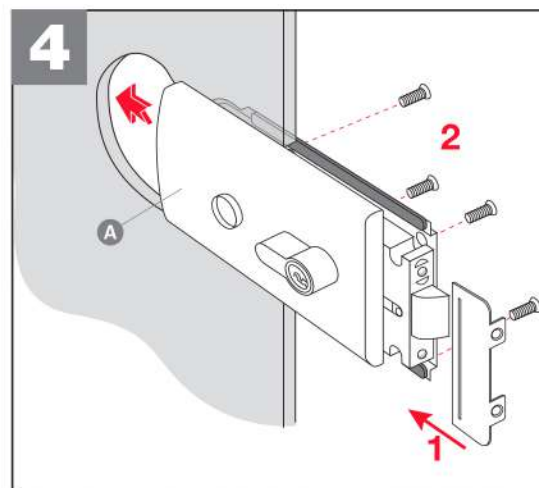
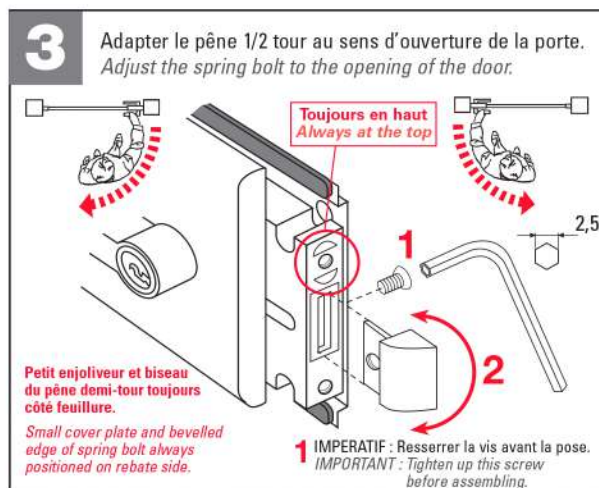
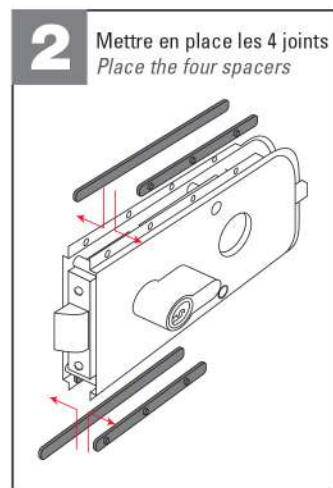
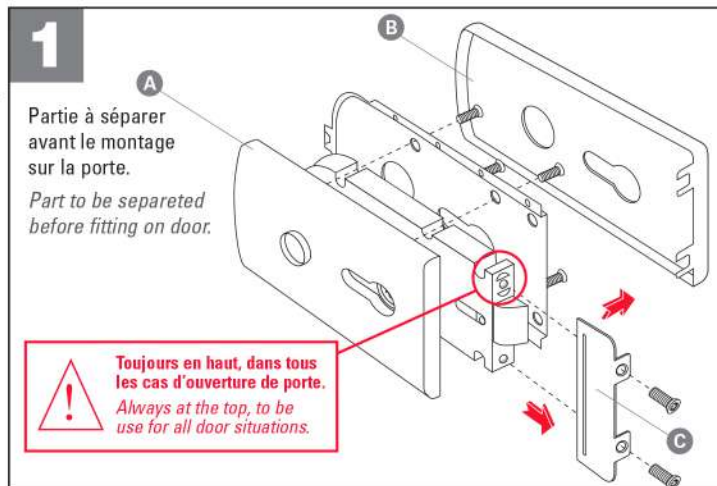
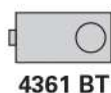
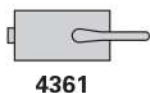
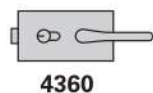


Notice de pose pour serrure «SÉRIE 4360 et 4380» pour verre d'épaisseur 8 mm série 4360.**.0 et 4380.**.0 pour verre d'épaisseur 10 mm série 4360.**.4 et 4380.**.4

Fitting instructions for lock «SERIES 4360 and 4380» 8 mm thick glass series 4360.**.0 and 4380.**.0 10 mm thick glass series 4360.**.4 and 4380.**.4

Montage sur encoche 64A *For mounting on 64 A notch*



Graissage : Pulvériser au moins une fois par an un lubrifiant par l'orifice du 1/2 tour.

Lubrification : At least once a year spray a lubricant into the spring bolt cavity.